



▼ APPLICATION

Emission Controls

- ▶ Emissions controls were upgraded at a generating facility consists of 6 hydroelectric power plants upgraded with DCL catalysts.

▼ CATALYSTS

- ▶ Four (4) x 3 MW EMD 645 engines Supplied by DCL, Internatinal Inc.



▼ EXHAUST PIPING

- ▶ Exhaust pipes with insulation supplied by LOGGERS, NL:
  - Modular elements
  - Stainless steel inner & outer wall (0.5 mm)
  - Compressed rockwool insulation



▼ PROJECT OVERVIEW



Motor-Services Hugo Stamp, Inc. recently completed the overall design and on-site installation of four DCL Catalysts on six 3MW EMD 645 engines to bring the power plant into compliance with RICE NESHP regulations to reduce CO by 70%. The project was a partnership between Governor Control Systems, Inc., DCL International Inc., and LOGGERS.

- ▶ MSHS assembled exhaust elements supplied LOGGERS. (FIGURE 1 .0, 1.1)
- ▶ Elements are prefabricated with inner- and outer tube, including insulation. (FIGURE 2 .0)
- ▶ Sealing ring with preformed grooved clamp ring. Fully assembled it will contain exhaust gases inside the pipe system and adds sturdiness to the assembly. (FIGURE 3.0)
- ▶ End joints with standard pipe flanges for transition to flanged components. (FIGURE 4.0)
- ▶ Over 50% cost savings overall when considering labor and material versus conventional pipe systems.



FIGURE 1 .0



FIGURE 2.0

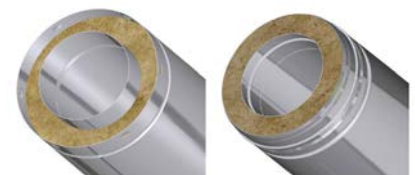


FIGURE 3 .0

FIGURE 4 .0



FIGURE 1.1





MSSH is part of the MSSH Group of companies offering turnkey solutions for prime movers in marine and land-based power applications. Learn more at [www.mssh.com](http://www.mssh.com) or email us at [info@mssh.com](mailto:info@mssh.com)

**Southeast / Bahamas**

3190 SW 4th Avenue  
Fort Lauderdale, FL 33315  
Phone: 954-763-3660  
Toll Free: 800-622-6747  
Fax: 954-763-2872

**Gulf Coast**

1509 Sams Avenue  
Harahan, LA 70123  
Phone: 504- 265-8800  
Fax: 504-265-8838  
Toll Free: (800) 622-6747

**Pacific Northwest**

3425 16th Avenue West  
Seattle, WA 98119  
Phone: 206-297-0300  
Fax: 206-297-0302

